

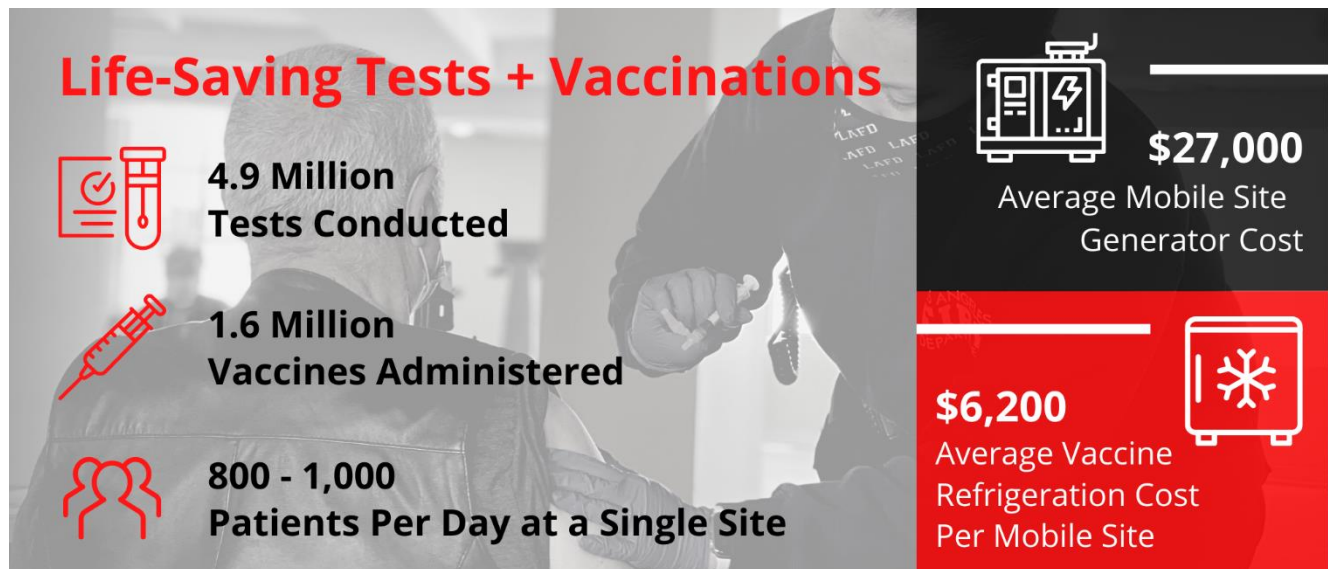
2021-2022 Funding Highlights

The 2021-22 fiscal year that ended on June 30, 2022, was a difficult transitional period for all, particularly the nonprofit sector.

Despite the struggles of operating in a global pandemic, the Los Angeles Fire Department (LAFD) Foundation provided more than **\$2.6 million** towards our firefighters' most pressing needs.

This report highlights the tangible impact of your donation and shows how a community of loyal donors improved the LAFD's ability to protect the people of Los Angeles. Your support made the following successes possible.

COVID RESPONSE RESOURCES + SUPPORT



Last year, supply chain challenges and budgetary constraints hindered the LAFD COVID Division's ability to obtain needed resources to provide testing and vaccination services to as many Angelenos as possible. Items ranging from refrigerator units to surge protectors were in short supply as the Department expanded efforts to provide wider access to underserved communities.

Emergency funding from the LAFD Foundation helped cover infrastructure and logistical equipment costs (e.g., portable generators, computers, cold storage) to power the Dodger Stadium and Crenshaw Christian sites - two of the largest, and longest-running testing and vaccination sites.

The LAFD Foundation also provided funding for 91 community sites, and nearly 100 mobile clinics for senior centers, assisted living communities, nursing homes, and subsidized housing locations.

Lastly, the LAFD Foundation purchased electrical system upgrades to safeguard the power supply for the LAFD Medical Supply Unit's freezers and refrigerators. Donations helped protect the safety and integrity of the vaccine resources at the LAFD's central supply hub serving more than one million Angelenos.



A firefighter/paramedic administers a vaccine at a one-day community site in South Los Angeles.

"Our work would not have been possible without the resources supplied by the LAFD Foundation and its supporters. Thanks to those donations, hundreds of thousands of Angelenos, and their families, have the protection and peace of mind that comes with being vaccinated."

*Battalion Chief Michael Castillo
Liaison Officer for the LAFD's COVID Division*

SUPPLYING ESSENTIAL EQUIPMENT FOR FIRE STATIONS



Fire stations function as a home away from home for the four to twenty-plus members on duty at any given time. Between emergency calls, mandatory apparatus maintenance, and training obligations, firefighters must squeeze in time for cooking, personal fitness, and everyday household responsibilities.

As a result of irregular daily regimens, items like dishwashers, dryers, and treadmills endure continuous use and sustain heavy wear and tear. When an essential appliance breaks down, the compounding impact can make living conditions even tougher.

The Adopt-a-Fire Station program (AAFS) offers families and neighborhoods a way to give back to their local station and say thank you for the selfless service firefighters deliver each day. Through the AAFS program, fire stations can request the replacement of aging or broken appliances, mattresses, fitness equipment, tools, and more. This past funding cycle, more than 1,000 invoices and 240 grant requests were fulfilled.

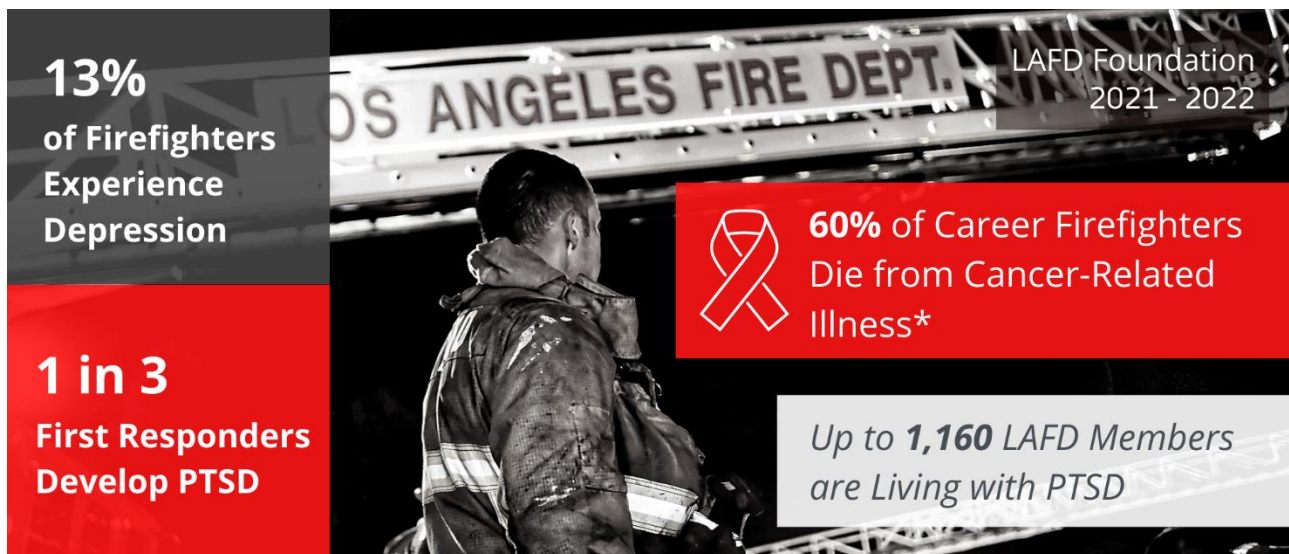


Kitchen-related items account for nearly 20% of AAFS grant requests.

“The mattresses, porta-coolers (apparatus bay fans), air purifiers, and other resources provided by the LAFD Foundation are so greatly appreciated by our members. These items go a long way towards improving our living and working conditions. The impact of the [AAFS] program is really evident for stations in underserved areas where they would have a much tougher time replacing everyday essentials like a washer or fridge. This program makes a difference.”

*Captain Branden Silverman
LAFD Fire Station 74, Tujunga*

FIREFIGHTER HEALTH, SAFETY, AND WELLNESS

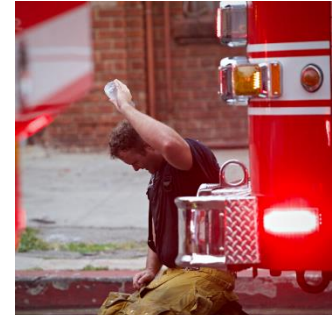


**Cancer-related deaths sourced from the International Association of Fire Fighters (IAFF).*

At the pandemic's peak, more than a third of the LAFD's workforce was ill or under quarantine. The remaining available firefighters rose to meet unprecedented challenges and carry the incident load of more than 1,200 daily emergencies.

Two years-worth of pandemic, societal, and other stressors led the LAFD's Behavioral Health Program to treat more clients than ever. Your generous support has helped increase access to counseling services for members involved in traumatic events or working to overcome mental health-related struggles.

The LAFD Foundation funded specialized training for the Department's fire psychologists on the impacts of the COVID-19 pandemic, including Dialectical & Behavioral Based Therapy (Distress Tolerance), Acceptance and Commitment Therapy (COVID-19/Chronic Illness), and Cognitive Process Therapy. Donations also covered stipends and other services to augment the group therapy program, alleviate caseload backlog, and develop a pipeline of future fire psychologists.



Firefighters and paramedics, especially in the LAFD's busiest service areas, can experience multiple traumatic events in a single shift.

"Pandemic stressors and struggles are evident in our firefighters. Helping them identify the signs and symptoms of stress is key to preventing anxiety, depression, mood disorders, and even suicide. We are protecting the Fire Department's greatest asset – our firefighters. Support from the [LAFD] Foundation and its donors enables us to expand firefighters' access to counseling and support resources in hopes of preventing mental health-related tragedies."

*Dr. Krystle Madrid, Psy.D.
Fire Psychologist, LAFD Behavioral Health Unit*

Canine Therapy Program

The LAFD Foundation provides 100% of the funding for the LAFD's Canine Therapy Program - another resource to help firefighters experiencing psychological or emotional crisis.

A certified therapy dog and handler duo are deployed to critical incidents and situations to help firefighters manage the heavy stress and emotions they experience when responding to tragedies.

Therapy dogs react when a firefighter exhibits signs (physical cues) of anxiety or emotional spiraling. According to Tom Tackett, founder, and president of the Patriotic Service Dog Foundation (PSDF), "a therapy dog provides a safe way for the release of feelings and emotions. They help to balance cortisol levels without the stigma of judgment."

"These animals do a remarkable job of sensing who to approach, who might need a bit of comfort or consoling. As handlers, we notice the immediate shift in a person's demeanor even after just a moment of connecting with a therapy dog. Often, the person they are comforting doesn't even realize what's happening. They just seem to feel better."

"Since we acquired Willow, we have assisted dozens of firefighters on a one-on-one basis, and in group sessions. We are grateful for this program and for the donors who helped support it."

*Battalion Chief Robert Takeshita
LAFD Peer Support Counselor and Therapy Dog Handler*



Willow, the LAFD's official therapy canine, visits with members at Fire Station 27 in Hollywood.

Extractors

As part of the ongoing effort to address longer-term health and safety concerns, the LAFD and LAFD Foundation have a joint goal of securing an extractor for every fire station.

Extractors are essentially commercial-grade washers that remove carcinogens and other harmful particulates from soiled and contaminated turnout gear.

Your support helped the LAFD Foundation purchase these critical systems that clean firefighters' smoky, ash-laden, turnout gear after an incident. During this fiscal cycle, the LAFD Foundation covered the cost to purchase six new extractors.

"Extractors are a tremendous asset in the fight against cancer since nearly everyone in this Department knows a firefighter who has died of occupational cancer."

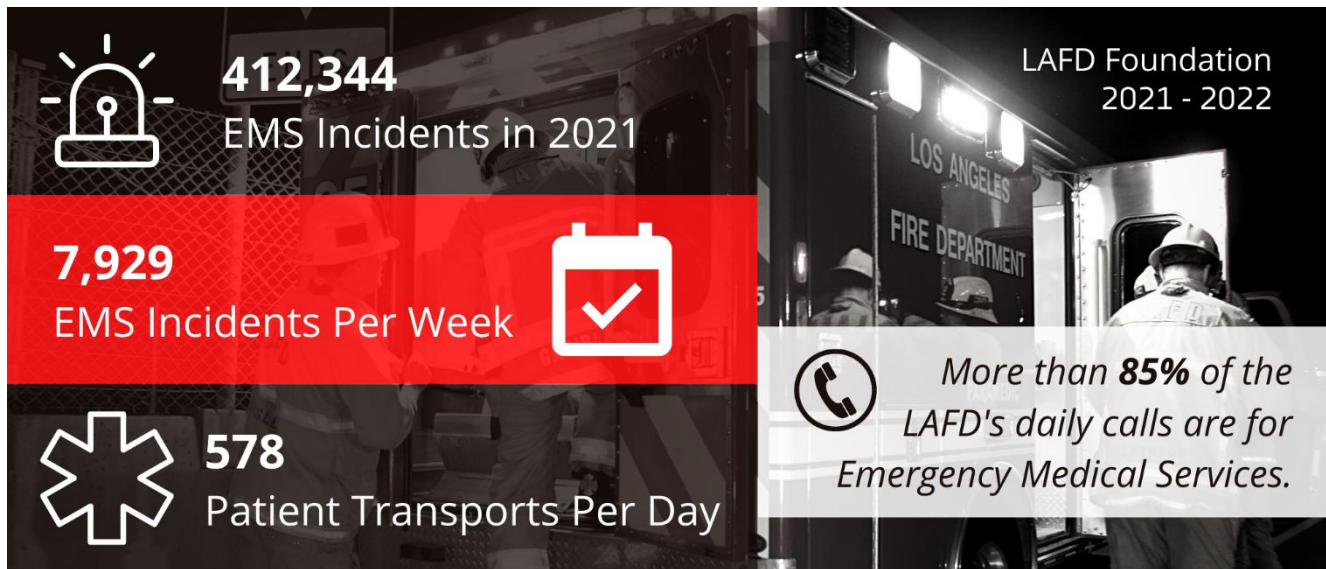
"Ten years ago, my best friend on the job died of kidney cancer. He was a tenured captain. Since then, it hasn't been just a job; it is my mission to keep as few names as possible from being added to the memorial wall."

*Battalion Chief Scott Quinn
LAFD Risk Management Section*



An extractor (above) purges toxins from turnout gear with the power and speed of 100-Gs (one hundred times the force of gravity).

LIFE-SAVING MEDICAL TECHNOLOGY



From heart attacks to heat stroke, the LAFD handles pre-hospital care for more than 1,000 medical calls and transports nearly 600 patients to area hospitals each day.

In life-or-death situations, when every second counts, it is imperative that firefighters have access to the best available medical resources. For this reason, the LAFD Foundation helped fund the telemedicine program, which uses medical professionals to triage incoming 9-1-1 calls and dispatch field resources more efficiently. The LAFD Foundation also helped purchase state-of-the-art automated external defibrillators (AEDs) for every LAFD ambulance.

Telemedicine Program

The LAFD expedited the launch of its telemedicine program with software, licenses and computer equipment provided by the Foundation. More than two years in the making, the program uses physicians, nurse practitioners, and physician assistants to screen potential COVID-19 patients and other individuals calling 9-1-1 with non-life-threatening issues.

Although still in its infancy, the program has reduced the number of low-acuity patient transports, improved deployment efficiency, and helped redirect resources to incidents with the greatest needs.

Automated External Defibrillators (AEDs)

AEDs are used to monitor, diagnose, and treat life-threatening cardiac arrhythmias and sudden cardiac arrests. These devices are designed to



The telemedicine program allows healthcare professionals to evaluate patients remotely, using smartphone technology.

analyze the heart rhythm and deliver an electric shock to victims of ventricular fibrillation to restore normal heart rhythm.

In the spring of 2022, the LAFD Foundation authorized the purchase of 275 state-of-the-art, wireless-enabled AEDs.

The LAFD's emergency medical technicians (EMTs) and paramedics will be able to use these life-saving devices on the scene of an emergency or while transporting patients to hospitals and trauma centers.

“As cardiac-related incidents disproportionately affect socio-economically disadvantaged patients and communities of color, these AEDs will undoubtedly assist us in our goal of overcoming the health inequities of cardiovascular emergencies in the years to come.”

*Stephen Sanko, MD, FACEP, FAEMS
Acting Chief Medical Officer
LAFD Emergency Medical Services Bureau*



Replacing and upgrading the AEDs used to diagnose and treat life-threatening cardiac emergencies was a top priority for FY21-22.

WILDFIRE SEASON

An infographic featuring a background image of firefighters in gear. On the left, there are three statistics: '200,000 + Acres Inspected', '155,462 Parcels of Land Inspected', and '869 Brush Fire Incidents Since June 2021'. On the right, there is a red box with a thermometer icon and the text 'Average Brush Fire Temperature Can Reach 800°C'. Below this, a white box contains the text 'BY THE NUMBERS' and 'Brush Clearance + Fire Prevention'. In the top right corner, it says 'LAFD Foundation 2021 - 2022'.

200,000 +
Acres Inspected

155,462
Parcels of Land Inspected

869
Brush Fire Incidents Since June 2021

LAFD Foundation
2021 - 2022

Average Brush Fire
Temperature
Can Reach 800°C

BY THE NUMBERS
Brush Clearance + Fire Prevention

Last fire season, more than 8,600 fires scorched close to 2.6 million acres across California. Thankfully, Los Angeles was spared from a particularly intense outcome, thanks largely to the resources your donations helped provide.

In the months leading into fire season, the LAFD took preventative measures to lessen risks to fire-prone communities and natural spaces. Once fire season hit, the LAFD aggressively attacked those

fires to minimize spread and losses. In both cases, the LAFD utilized tools and technology provided by the LAFD Foundation.

In the past 12 months, the LAFD's Fire Prevention Bureau, Brush Clearance Unit (BCU) inspected more than 155,000 parcels and issued 12,165 brush-related citations. Wireless-enabled tablets, software, and other resources were funded to help the BCU achieve a 98% success rate.

Neighborhoods such as the Hollywood Hills, Pacific Palisades, Brentwood, Griffith Park, Sylmar, and La Tuna Canyon still face a year-round threat from brush fires. Thanks to the donated supplies and equipment, the LAFD's Wildland Fuel Management Unit cut and cleared nearly 70 miles worth of fire roads to protect these and other high-risk communities.

Listed below are the wildfire-related tools and equipment your donations helped to purchase.

Strike Team Go Kits

A strike team is a viable "mutual aid" resource typically consisting of five engines and 20 to 22 firefighters who specialize in fire suppression in rugged terrain. This past season, multiple teams were deployed to assist with 18 fires in other parts of the state, including the enormous Dixie Fire, which burned a combined acreage larger than the size of Rhode Island.

These strike team Go Kits were equipped with communications gear, weather monitoring instruments, tools, tents, and overnight equipment for lengthy assignments in remote areas.

Wildland Brush Tools

These light and durable hand tools (e.g., axes, rhinos, pulaskis, wildland shovels) are specially designed to help ground crews cut through tree limbs, clear brush overgrowth, and remove potential fuel sources. This past fire season, the LAFD Foundation supplied Crew 3 (the LAFD's volunteer brush clearance crew) and multiple stations with these tool kits.

Crew Packs

Crew packs haul everything needed for up to 24 hours, including radio equipment, an emergency fire shelter, food, and supplies like batteries, extra chainsaw chains, fuel and hydraulic oil for power tools, and fire fuses. These load-bearing packs are a crew member's lifeline once they walk away from their vehicle. In anticipation of another destructive fire season, 60 new crew packs were provided.



The rhino used by this firefighter is one of several specialized hand tools used to manually snuff out brush fires and hotspots.



The 20-member strike team that deployed to assist with the Caldor Fire that burned over 221,000 acres of the Sierra Nevadas and destroyed more than 1,000 structures.



ABOUT CREW 3

Crew 3 is the LAFD's brush clearance team, comprised entirely of volunteer firefighters.

The unit serves as the premiere feeder program for the LAFD, CAL FIRE, the U.S. Forest Service, and other top-tier fire agencies. Crew 3 members work year-round under the direction of the LAFD's Wildland Fuel Management Unit.

Brush Shirts

Brush shirts (pictured in the Crew 3 image above) are a lighter, less bulky variation of a turnout jacket, worn to protect members during physical firefighting tasks in hazardous outdoor conditions, like falling debris and live embers. Donations helped provide new brush shirts for Crew 3 members.

"The LAFD takes a highly aggressive approach to brush clearance and fire containment work because we're trying to prevent tragedies. We have to use every tool and resource in our arsenal to minimize those risks. The [LAFD] Foundation provided us with some incredible new tools and equipment to help with this fight. Without the support of donors and our community, L.A.'s hillside neighborhoods would be facing far greater fire risks."

*Captain Rich Diede
Commander of the LAFD's Wildland Fuel Management Unit*

YOUTH EDUCATION + TRAINING

The Future of the LAFD

LAFD Foundation 2021 - 2022

20	5	3	120
2021 LAFD Drill Tower Graduates with Cadet Program Experience	HS Magnet Programs	Youth FIRE Academies	LAFD Cadets

As the effects of the pandemic slowly retreated and public health protocols eased, the LAFD Foundation resumed funding for vital youth recruitment and outreach programs administered by the LAFD. These programs offer teens and young adults the opportunity to explore careers in the fire service while they develop skills in leadership, teamwork, and overall confidence.

Pandemic restrictions significantly impacted the ability to offer these hands-on programs. Thankfully, the LAFD's High School Magnet and Cadet programs are back in operation. Girls Camp and Youth FIRE Academies are projected to resume in 2023.

Funding from the LAFD Foundation supports the Department's long-term recruitment efforts to hire local candidates that reflect the diverse communities served by the LAFD. Growing numbers of newly hired LAFD recruits and drill tower participants credit the youth programs as the life-changing catalyst that propelled them towards a career with the LAFD.

The LAFD Foundation awaits the return of two impactful youth programs (Girls Camp, and the Youth FIRE Academies) in the next fiscal cycle.



All five LAFD high school magnet programs reported a 100% graduation rate among participating seniors in 2022.

The following programs were funded during the FY21-22 cycle:

- **Cadet Program** | 120 FY21-22 Participants
Designed for 14 to 20-year-old individuals who are serious about pursuing a career with the fire service. The program resumed in 2022 after a two-year hiatus.
- **High School Magnet Program** | 968 FY21-22 Participants
Prepares Los Angeles Unified School District students for entry-level careers and post-secondary education in the field of public service.

"My brother and I joined the LAFD cadet program as teens. It sounded like something fun and different to try. Looking back, it was one of the best decisions of my life. I was exposed to so many great experiences, met incredible mentors, and gained skills that I still rely on today. Most importantly, the program instilled a sense of pride and purpose that comes from helping others. It is great to see the [LAFD] youth programs flourishing, and hopefully inspiring the next generation of firefighters."

*Firefighter Edgar Garcia
LAFD Fire Station 27, Hollywood*

Photo credits: Gary Apodaca, Henry Berkson, Austin Gebhardt, Leo Kaufman, Mike Meadows, and the Los Angeles Fire Department



The funding accomplishments highlighted in this document were made possible through generous contributions (\$1,000 +) from loyal friends, foundations, corporate sponsors, and charitable organizations. Thank you for helping to meet the LAFD’s most pressing needs.

20th Century Fox Television
 ABC Signature
 ABC7
 Marc Ackerman
 Mike Ahmar
 Air Lease Corporation
 Allana Buick & Bers Inc.
 David Altshuler
 Amazon
 Ameriprise Financial
 Rob Andelson
 The Annenberg Foundation
 AT&T Foundation
 Pramod Atluri
 Jeanne Axler
 Paul & Anissa Balson
 Bill & Elizabeth Bamattre
 Banc of California Charitable Foundation
 Bank of America
 Philip & Daniele Barach
 Andres Barajas
 Barrister Executive Suites
 Joanie Berkley
 Ada Berman
 Beverly Center
 Adam Biren
 Blacksmith & Jones
 Bob Industries LLC
 M H Buckeye Fund
 CARESTAR Foundation
 Caruso Family Foundation
 Sylvia Castillo

Cedars-Sinai Medical Center
 Centene Management Company
 The Children’s Trust
 Christina Development Corporation
 Bokyoung Chung
 ClubCorp - Braemar
 Suzanne Coffman
 Marie Cohen
 Valerie Cohen
 Mamie Coleman
 Competitive Aquatics Supply
 Confidence Foundation
 Corymore Foundation
 Nathan & Marilyn Cowles
 D.B.A. Blue Ribbon Sushi
 The David Geffen Foundation
 Davis Family Foundation
 Daniel Castellaneta & Deborah Lacusta
 Delta Air Lines
 Dennis E. and Dale Weiss Fund
 Gina DiSalvo-Burcham
 The Dolotta Family
 Susan Drake
 Paul Drecksel
 Tamara Dull
 Earl Lewis Goldberg Family Trust
 Michael Edlen
 The Eisner Foundation
 Encino Neighborhood Council
 Entertainment Industry Foundation
 Eric Esraillian
 Sean Fahey

Leila Fallejo
 Farmers Insurance Group
 Valerie Field
 Robert & Judy Flesh
 Foothill Trails District Neighborhood Council
 Melissa Frey
 Andrew Furgatch
 Gary Sinise Foundation
 Melvin Geliebter
 Sir Colin Gilbert
 Dave Gilman
 Gilula-Dreiman Family Trust DAF
 Lynn Glickman
 Good Hope Medical Foundation
 Helen Graves
 Bonnie Grey
 Cindy Griffin
 GROW @ Annenberg
 Cornelia Haag
 Deidre Hall
 Hathaway Dinwiddie
 The Hearthland Foundation
 Debby Helm
 Irene Hensel
 Richard & Jeanne Hersh
 Hey Wonderful
 Hollywood Hills West Neighborhood Council
 Julie Hsieh
 HUB Intl. Insurance Services Inc.
 Hungry Man Productions
 Amy Hussey

The HYM Investment Group
 Inchrist Community Church
 Marc Jacoby
 Jean Janson
 Joanne Marie & Marcel George Fdn.
 Johnston/Lesser Charitable Trust Fund
 Joseph & Fiora Stone Foundation
 Junior Firefighter Youth Foundation
 Deborah and Ivan Kallick
 Bill Kamer
 Caya Kaufman
 Jeanine and Kevin Kay
 Melissa Kelley
 Christopher Keyser
 Ethan Klein
 Dorena Knepper
 Francoise Koster
 L & R Donner Foundation c/o MGO
 L.A. Unified School District
 LaFetra Foundation
 Peter LaFleche
 Lake Mead Productions LLC
 Lee Lampe
 LAPD Devonshire PALS
 Timothy & Bernadette Leiweke
 Pamela Lifford
 Michael & Elaine Lips
 David Lopez
 Kathleen Lorden
 Los Angeles Lakers Youth Foundation
 Los Angeles Rams Foundation
 Los Angeles Twenty-Five Group LA25
 Stephen Luk
 M Strategic Communications LLC
 Robert & Roberta Magid
 The Management Group
 Marathon Petroleum Foundation
 Barbara Marcus
 Marquis Project Management
 Mary Margaret Sullivan Foundation
 Brandon Marz
 Robert Matheny
 The Matthew & Lee Love Foundation
 Joseph Matukewicz
 Mayor's Fund for Los Angeles
 McQuade Family Fund
 The Mesdag Family Foundation
 Michael & Kathleen McRoskey
 Michelle & Craig Taylor Family Fdn.
 Minim Productions Inc.
 Miriam Muscarolas Abramson
 MJK Foundation
 Sandra Morrison
 Mort & Sally Kirshner Family Fund
 Motorola Solutions Foundation
 Mountaingate Open Space
 Maintenance Association

Gary Mozer
 MUFUG Union Bank
 Aroon Mukhey
 Michele Mulrooney Jackoway
 Municipal Emergency Services Inc.
 K.R. Murdoch
 Deena & Ed Nahmias
 Ernie Navarro
 Neo Blue T.O.W Inc.
 Netflix
 Jeffrey Neu
 Neu Brothers Holdings
 Michelle Newberry
 Marti Noxon
 Hannelore Ogner
 Dipo Olatunji
 One Westside LLA
 Otis Booth Foundation
 Pacific 2.1 Entertainment Group Inc.
 Pacific Clinics - Uplift Family Services
 Pacific Coast Energy Company LP
 Cathryn & Victor Palmieri
 Partners Bank
 Pechanga Resort Casino
 Margaret Perella
 Frank Perna
 LP Perrett
 Phantasos Fund
 PL Bates Tzedakah Fund
 John Plueger
 Andrew Pomerantz
 Lyle Poncher
 Arnold Porath
 Porter Ranch Neighborhood Council
 Present Family Foundation
 Prettybird LLC
 R&G Charitable Fund
 Jodi Korn Radoff
 Anthony Reading
 Roberta Reece Kerr
 Barry Reed
 Joanna Roche
 The Rosenthal Family Foundation
 Ruby Family Foundation
 Saints & Hearts
 Jay Sanders
 Todd Sandler
 Shangri-La Construction
 The Shapiro Family Charitable
 Foundation
 Gavin Shearer
 Edward Shim
 Sandy & Hal Slan
 Smart & Final
 The Smidt Foundation
 Southern California Gas Company
 Spruce Healthcare Group

State Farm Insurance
 Steinberg-Kurtin Family Fund
 Marcy Stempler
 Steve & Lenore Newman Family
 Foundation
 Farrel Stevens
 Straussner & Sherman
 George Strompolos
 Rita & Pat Studstill
 Jac & Carol Stulberg
 Donna Sussman
 Gene Sykes
 Larry Taylor
 Tides Foundation
 John Tipton
 The Three Sisters Foundation
 GeorgeAnn Tobin
 Toyota4Good Fund
 Benny Tran
 Traub-Brittan Family Foundation
 UFCW Local 770
 Unibail-Rodemco-Westfield
 UFLAC, Local 112
 United Talent Agency
 Universal Television
 Mike Van Konynenburg
 W.M. Keck Foundation
 Ira Waldman
 Traci Wallace
 Elisabeth & Tim Ward
 Wasserman Foundation
 Weingart Foundation
 Joanne and Kenneth Weinman
 Martha Wells
 Wells Fargo Foundation
 Karen and Jerry West
 Whittier Trust Company
 Soelistoyati Wibisono
 Kevin Willenbrecht
 Jan & Stephen Winston
 Han Ma Um Seon Won
 Dr. Wendell & Terry Wong

For more information about the items or programs highlighted in this overview, please contact:

Tara Gurlides
 Development Director
 (310) 552-4139
Tara@supportLAFD.org